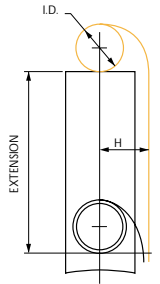
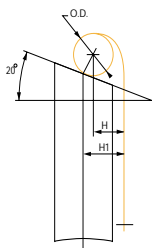


LOAD +/- 10%		EXTN mm	MATERIAL			I/D* mm	O/D* mm	FLAT TOP H mm	20° ANGLE BRUSH		SPRING ENDS	SPRING No.
N	Grms		T*	W	L				Hmm	H1mm		
.78	80	45	.0508	3.17	70	3.68	4.27	3.48	2.82	3.56	A	CB121
1.48	151	52	.0635	4.76	82	4.62	5.31	4.32	3.50	4.44	A	CB126
2.66	271	75	.1143	4.76	127	8.30	9.35	7.62	6.17	7.80	A	CB129
3.13	319	57	.1143	6.35	114	9.24	10.1	8.23	6.68	8.43	B	CB136
3.15	321	74	.1016	6.35	120	7.39	8.38	6.83	5.54	7.01	C	CB137
3.54	361	75	.1143	6.35	127	8.30	9.35	7.62	6.17	7.80	C	CB138
4.40	449	85	.1397	6.35	146	10.0	11.2	9.14	7.42	9.37	C	CB141
3.93	401	74	.1016	7.94	120	7.39	8.38	6.83	5.54	7.01	C	CB148
4.17	425	64	.1270	7.94	127	10.3	11.3	9.19	7.44	9.42	B	CB149
4.43	452	75	.1143	7.94	127	8.31	9.35	7.62	6.17	7.80	C	CB150
4.93	503	83	.1270	7.94	140	9.22	10.4	8.46	6.86	8.69	C	CB152
6.40	653	99	.1651	7.94	171	12.0	13.4	10.9	8.86	11.2	C	CB155
4.72	481	74	.1016	9.52	120	7.39	8.38	6.83	5.54	7.01	D	CB164
4.84	494	88	.1270	9.52	152	10.5	11.6	9.47	7.70	9.70	D	CB165
5.56	567	30	.1524	9.52	108	12.9	13.7	11.2	9.09	11.4	D	CB167
5.91	603	83	.1270	9.52	140	9.22	10.4	8.46	6.86	8.69	D	CB169
6.49	662	90	.1397	9.52	152	10.2	11.4	9.32	7.54	9.55	D	CB171
6.67	680	50	.1524	9.52	120	11.5	12.5	10.2	8.32	10.5	D	CB172
7.12	726	54	.1778	9.52	140	14.2	15.3	12.5	10.1	12.8	D	CB175
7.70	785	99	.1651	9.52	171	12.0	13.4	10.9	8.86	11.2	D	CB176
8.28	844	106	.1778	9.52	184	12.9	14.4	11.8	9.55	12.1	D	CB177
8.76	893	104	.2032	9.52	197	15.5	17.1	13.9	11.3	14.3	D	CB178
10.54	1075	59	.2540	9.52	178	20.0	21.4	17.4	14.1	17.8	E	CB180
11.78	1202	150	.2540	9.52	260	18.5	20.6	16.8	13.6	17.2	D	CB181
5.02	512	57	.1143	12.7	120	10.3	11.1	9.07	7.37	9.30	F	CB186
5.56	567	77	.1016	12.7	127	8.03	8.99	7.34	5.94	7.52	F	CB188
6.23	635	122	.1143	12.7	178	9.07	10.4	8.48	6.88	8.69	F	CB190
6.23	635	45	.1397	12.7	120	12.5	13.3	10.9	8.81	11.1	F	CB191
6.32	644	74	.1016	12.7	120	7.39	8.38	6.83	5.54	7.01	F	CB192
6.94	708	46	.1524	12.7	127	13.5	14.4	11.7	9.50	12.0	F	CB194
7.30	744	93	.1270	12.7	152	9.63	10.8	8.81	7.16	9.04	F	CB196
7.87	803	83	.1270	12.7	140	9.22	10.4	8.46	6.86	8.69	F	CB198
8.67	884	46	.1651	12.7	127	13.4	14.4	11.7	9.50	12.0	F	CB200
9.43	962	54	.1778	12.7	140	14.3	15.4	12.5	10.2	12.8	F	CB204
9.43	962	85	.1524	12.7	165	11.1	12.4	10.1	8.23	10.4	F	CB205
9.79	998	55	.2032	12.7	159	17.4	18.5	15.1	12.2	15.5	F	CB206
10.23	1043	99	.1541	12.7	171	12.0	13.4	10.9	8.86	11.2	F	CB207
10.40	1061	71	.1778	12.7	152	13.4	14.6	11.9	9.68	12.2	F	CB208
11.12	1134	69	.2032	12.7	165	16.1	17.4	14.2	11.5	14.5	F	CB210
12.01	1225	137	.2540	12.7	267	22.0	23.9	19.5	15.8	20.0	D	CB211
13.88	1415	103	.2540	12.7	222	20.1	21.8	17.8	14.4	18.2	F	CB213
15.75	1606	150	.2540	12.7	260	18.5	20.6	16.8	13.6	17.2	F	CB215
8.86	903	75	.1143	15.9	127	8.30	9.35	7.62	6.17	7.80	F	CB217
9.12	930	61	.1524	15.9	140	13.1	14.1	11.5	9.30	11.8	F	CB218
10.40	1061	114	.1651	15.9	197	13.7	15.1	12.3	10.0	12.6	F	CB220
11.26	1148	85	.1397	15.9	146	9.90	11.1	9.09	7.37	9.32	F	CB221
12.81	1306	99	.1651	15.9	171	12.0	13.4	10.9	8.86	11.2	F	CB224
13.79	1406	120	.2032	15.9	216	16.1	17.8	14.5	11.8	14.9	F	CB225
13.79	1406	106	.1778	15.9	184	12.9	14.5	11.8	9.55	12.1	F	CB226
14.68	1497	123	.2032	15.9	216	15.5	17.2	14.0	11.4	14.4	F	CB227
15.75	1606	121	.2032	15.9	209	14.8	16.5	13.5	10.9	13.8	F	CB228
17.61	1796	162	.2540	15.9	279	19.9	22.0	18.0	14.6	18.4	F	CB229
18.68	1905	140	.2540	15.9	254	19.1	21.2	17.3	14.0	17.78	F	CB230
19.66	2005	150	.2540	15.9	260	18.5	20.7	16.8	13.6	17.2	F	CB231
20.02	2041	159	.3048	15.9	305	24.7	27.1	22.1	17.9	22.6	F	CB232
22.24	2268	168	.3048	15.9	305	23.1	25.5	20.8	16.9	21.3	F	CB233

\*May be varied to meet load specification.



Flat Top Brush



20° Angle Brush

## Brush Spring Ends

